



NORPA PRESENTS
A NORPA PRODUCTION



Flow



THU 1 – SAT 3 JUL 2021

norpa

From the Artistic Director

At the heart of *Flow* is Mitch's own journey in making the show — it's a brave undertaking to write and perform in a theatre show, even for the most experienced or well-trained actor.

Yet, Mitch has been steadily developing *Flow*, and NORPA has surrounded him with support and theatre making expertise to help stage this story sensitively.

The way Mitch has involved the community and elders has been inspiring to be a part of and all that support from the community can be felt and seen in *Flow*. This is a rare and brave piece — both personal and universal. As we listen to the Dirrangan story we get to reflect on the rivers and water of our region, the importance of water conversation and the stark warning of the nature of greed, intertwined with the deeply personal journey of a hip hop artist trying to navigate his role in learning and sharing his First Nations culture.

Seeing *Flow* develop into the piece it is today is an absolute thrill. NORPA is proud to be premiering this work. It's apt to be sharing an ancient, yet contemporary local story in these times.

Julian Louis
NORPA Artistic Director

About the Show

Mitch King is a Yaegl Bundjalung man with a story to tell. Joined on stage by long term collaborator and sound artist Blake Rhodes, Mitch tells his story inspired by community, Country and the first native title claim on a body of water in Yamba.

Told through contemporary dance, poetry, visual imagery and rap, *Flow* is a new dreaming, strengthening respect for Eldership and engaging young people in the living traditions held in local ancestral stories.

Flow is a yarn about Yaegl country and neighbouring nations, within NSW. It's a tale of searching and finding identity in music, urban culture and nature, an ancient story acknowledging how and why water flows through this region and its cultural significance.

Director's Notes

***Flow* is a unique art-life project connecting me with my home, family and community.**

I first met Mitch King at a gathering with all the 2017 NORPA Associate Artists. It was an inspiring moment yarning with him about Creative Producing and sharing our childhood memories of Angourie, Maclean and Woody Head, and growing up in Yaegl country.

Together we have been working on *Flow*, along with Blake Rhodes, for the past few years. Initially developing concepts, sound and choreography, exploring script writing and learning cultural protocols, then interviewing Yaegl elders and emerging leaders followed by filming on Country. Through deep listening, observation and research, *Flow* has evolved from Mitch's initial 2018 spoken word performance about the Yaegl Native Title Determination Day, into a supercharged, multimedia theatre work.

Flow is the product of a very collaborative effort. Mitch and Blake are new to the theatre form, however with each creative development our ambitious vision has expanded and the cultural and creative team has grown. Alongside the lead artist's brave work, the insightful knowledge of Yaegl family and phenomenal artworks of Frances Belle Parker are crafted into the show with the expert theatre making skills of our extended Creative Team, to whom I am grateful for all their contributions and support.

Acknowledging Country is a transforming embodiment of precious water — survival springing from voice and body, unifying cultural energy with attention, intention and touch. Hearing Yaygirr language as we learn a very ancient and sacred story of protection and healing, deepens our understanding and care of this magnificent region.

Flow is a powerful yet gentle project in a difficult time of truth telling for the Arts, society and ecology, especially as we appreciate the safety of keeping things local.

Jade Dewi Tyas Tunggal

Writer's Notes

In 2018 history was made when the Yaegl people of the Lower Clarence won a native title claim over the ocean.

This was the first native title claim on a body of water and came after 20 years of proceedings. The native title claim meant that Yaegl people would finally be free to fish, go worming or gather pippies without someone looking over their shoulder.

My daughter also wanted to do a school project on Yaegl country and the day of the Yaegl determination. When she asked me about it, I realised I didn't know much about native title. This was such a momentous occasion for Yaegl people, so we did some research and what we found became part of the inspiration behind *Flow*.

My vision for *Flow* is for the continuation of our ancestor stories through an urban, contemporary setting while still valuing the practice and protocols of culture. The process for me of creating this show was very profound as it helped me to understand who I am as a Yaegl man and how I need to keep the stories of my people alive.

The journey of talking to elders and leaders of the Yaegl community resonated that Biirrinba, the beautiful Clarence River, is a very special part of our family that connects from our ancestors to the present day.

I would like to acknowledge and thank NORPA, all the elders, emerging leaders, family, friends and my *Flow* team that have been a part of this journey. This show is my gift of gratitude to you all.

Mitch King

Creative Team

WRITER / PERFORMER

Mitch King

COMPOSER / PERFORMER

Blake Rhodes

DIRECTOR

Jade Dewi Tyas Tunggal

LEAD DESIGNER

Mic Gruchy

LIGHTING DESIGN

Karl Johnson

CULTURAL & DRAMATURGY CONSULTANT

Rhoda Roberts

WRITING SUPPORT

Kirk Page

Damion Hunter

VIDEOGRAPHY

Maiara Skarheim

VISUAL ART

France Belle Parker

PRODUCER

Letila Mitchell

YA EGL ELDERS AND EMERGING LEADERS

Gilbert Laurie

Ron Heron

Lenore Parker

William Walker

Ken Laurie

Shondell Laurie

Frances Belle Parker

Elsdon Charlton

COMMUNITY DEVELOPMENT

Helen Tyas Tunggal

LIGHTING OPERATOR

Padi Boliger

AUDIO ENGINEER

Stephen Shaw

Cast & Creative Team



Mitch King

WRITER / PERFORMER

Mitch King is a Yaegl Bundjalung man from the Far North Coast region of NSW. He is a creative producer specialising in hip hop music and dance and has been working at NORPA as an associate producer and associate artist since 2014. *Flow* is Mitch's debut as a writer and performer for theatre. Mitch is one third of award winning hip hop group Teddy Lewis King, and teaches dance with young people around the region. He has a background in youth work and collaborates with young people on community events and programs.



Blake Rhodes

COMPOSER / PERFORMER

Blake Rhodes is a hip hop artist known for his innovative brand of electronic flavoured hip hop. He is one third of award winning hip hop trio Teddy Lewis King and support slot for Winston Surfshirt and a headline show in Sydney. *Flow* is Blake's theatre debut as a composer and performer.

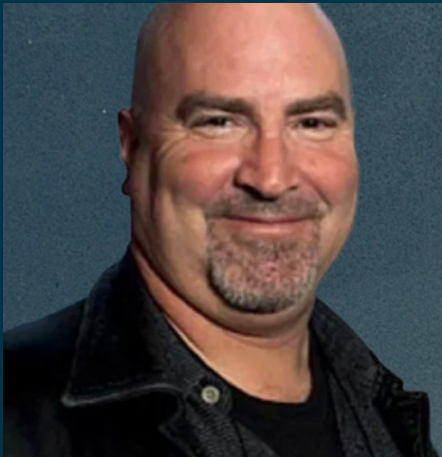


Jade Dewi Tyas Tunggal

DIRECTOR

Australian born dance-artist, performance-maker and teacher, Jade Dewi Tyas Tunggal, with convict Australian and Scottish heritage is also directly descended from Yogyakarta's first Sultan 1755 (Kangjeng Hamengku Buwana) and Borobudur, Java Buddhist Community 800AD. In 2017 Jade became a NORPA Associate Artist. Emergent studies in Body Mind Centering with Bonnie Cohen and Contact Improvisation at ACIC informed her teaching in NORPA's weekly Training Ground workshops for artists and the Horses Mouth (2017/18) project — a NORPA emerging Indigenous dance partnership with Beyond Empathy. Current projects *Flow* and *Smoke* are trans-indigenous offerings reweaving culture and nature.

Cast & Creative Team



Mic Gruchy
LEAD DESIGNER

Mic works across stage, screen and video art. He is a pioneer of video design for theatre, designing shows for all the major companies and festivals around Australia over more than 30 years. He has produced projections on the Sydney Opera House and video designs for theatre, opera and dance around Australia, in London's West End, across Europe and Asia. His shows have won Helpmann Awards and he was awarded an Australia Council Established Artist's Fellowship for Interdisciplinary Practice in 2012. Mic teaches Video Design and Production at the National Institute of Dramatic Art in Sydney and has lectured in media at University of NSW and University of Wollongong.



Karl Johnson
LIGHTING DESIGN

NORPA's Production and Technical Manager since 2001, Karl has 25 years experience in lighting design and production management. Credits include Company B, Sydney Theatre Company, Melbourne Theatre Company, Urban Theatre Projects, Powerhouse Youth Theatre, Lismore Lantern Parade and collaborations with a number of artists such as Noel Tovey, Deborah Leiser-Moore and Michael Hennessy. Karl was the Lighting Designer and Production Manager for the 2016 and 2019 season's of *Dreamland*.



Rhoda Roberts
CULTURAL AND DRAMATURGY CONSULTANT

A member of the Bundjalung nation, Widjabul clan, Rhoda is Creative Director First Nations at NORPA, Festival Director of the Boomerang Festival and Creative Curator Parrtjima Festival, Alice Springs. Until recently Rhoda was the Head of First Nations Programming at the Sydney Opera House. In 2016 Rhoda was presented with an Order of Australia for her distinguished service to the performing arts, leadership, advocacy and promoting contemporary Indigenous culture. She was a co-founding member of Australia's first national Aboriginal theatre company, the Aboriginal National Theatre Trust (ANTT) and coined the term Welcome to Country, establishing protocol manuals and welcomes by local custodians for the arts industry.

Acknowledgements

Thank you

Thank you to NORPA Artistic Director Julian Louis and the entire NORPA team, the Yaegl Traditional Owners Aboriginal Corporation and Charlotte Brooks for her care in bringing our vision for the set design to life.

About NORPA

NORPA is a company that makes theatre from the ground up. We take inspiration from the country and culture around us. Based in the Northern Rivers of NSW, we program and co-produce shows by leading national companies too, but creating original Australian work is at the heart of what we do and why we exist.

PERFORMANCE PARTNERS



GOVERNMENT PARTNERS



NORPA is assisted by the Australian Government through the Australia Council, its arts funding and advisory body.

NORPA is supported by the NSW Government through Create NSW.